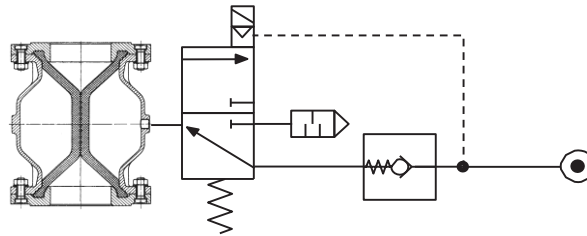
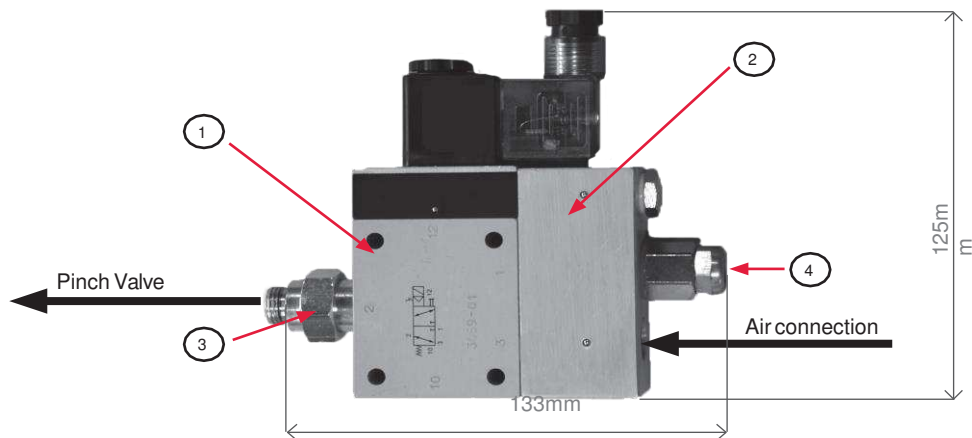


## Safety Arrangement type SS



By using a protection circuit a closed air pinch valve will stay closed if the compressed air/power supply fails. If the compressed air fails, the air operated pinch valve cannot be opened by the solenoid valve (electrically/ mechanically). If there is a power cut, the pinch valve can be opened and closed by means of a manual override. The used solenoid valves are checked especially for tightness, thus guaranteeing the longest blow-down pressure stability possible. The blow-down pressure stability, which is affected by time in terms of how long a air operated pinch valve will stay closed without a compressed air supply, is still dependent on the volume of air and a air operated pinch valve's tightness.



### Consisting of:

- ① 1 x Solenoid Valve\* with light connector and protective circuit
- ② 1 x Control block
- ③ 1 x Fitting G 1/4" with O-ring
- ④ 1 x Silencer + Small parts

Technical details subject to change without notice.



**Basecamp Process Components, LLC**

8055-C Corporate Blvd., Plain City, Ohio 43064, USA

T: +1 614-873-8995 • E-mail: [info@akopinvalves.com](mailto:info@akopinvalves.com) • Web: [www.akopinvalves.com](http://www.akopinvalves.com)